



# RELAYS & CONTACTORS

## POWER RELAYS

### KE375, KE900 SERIES

#### DESCRIPTION

The Deltrol Controls KE375 and KE900 Series of 30A relays are heavy duty power relays commonly used for energy management, refrigeration, and HVAC control applications. High power handling capability and small size make these power relays particularly suited for motor control, heater loads, and lighting control. The KE900 Series features an open frame construction, and the KE375 is encased in a clear polycarbonate cover.

#### FEATURES

- **Small size**
- **High-power handling capability**
- **One-, two-, and three-pole models**
- **24 VAC, 24 VDC & 120 VAC coils**



KE900D



KE900S



KE375



#### SPECIFICATIONS

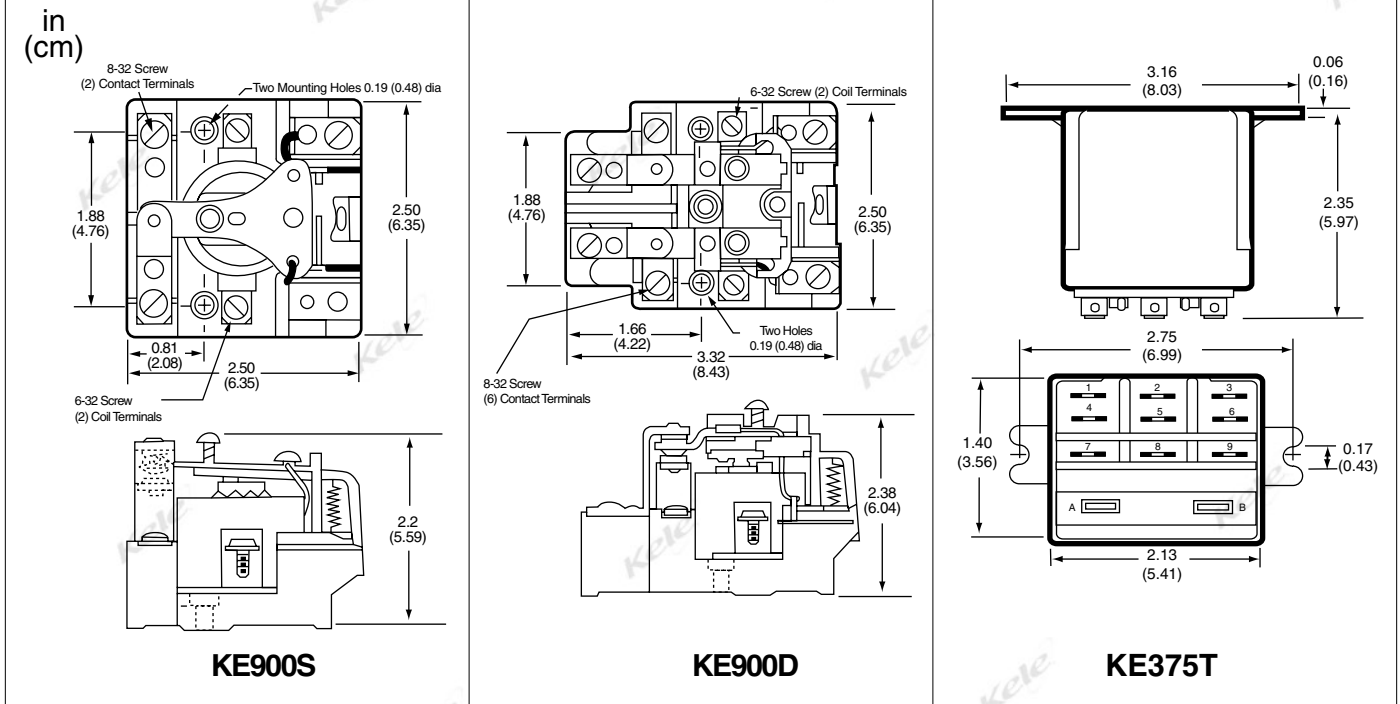
	KE900	KE375
<b>Coil voltage</b>	24 VAC/60 Hz, 120 VAC/60 Hz, or 24 VDC	
<b>Coil power</b>	AC: 9.5 VA sealed DC: 2.0W	AC: 4.6 VA DC: 2.6W
<b>Pull-in voltage</b>	AC: 85% or less of nominal DC: 75% or less of nominal	
<b>Contact ratings</b>	30A or 1-1/2 hp @ 120 VAC / 240 VAC 20A or 2 hp @ 600 VAC 30A @ 28 VDC, resistive 3600W @ 120 or 240V (ballast) 2 hp @ 240 VAC 20A @ 600 VAC 20A @ 125 VDC (D models only)	30A @ 300 VAC, 80% PF 15A @ 600 VAC, 80% PF 30A @ 28 VDC 1 hp @ 120 VAC 2 hp @ 240 VAC / 277 VAC 3 hp @ 480/600 VAC, 100,000 cycles 20A @ 277/480 VAC ballast, 6000 cycles
<b>Mounting</b>	3/16" dia mounting holes	Top-mount cover with slotted tabs
<b>Terminals</b>	Screw terminals	0.25" x 0.032" quick connects
<b>Contact material</b>	Silver cadmium oxide	
<b>Dielectric strength</b>	2200V RMS between contacts 2200V RMS between other elements	2200V RMS between contacts 3750V RMS between other elements
<b>Operate/Release time</b>	30 ms	15 ms
<b>Weight</b>	0.65 lb (0.29 Kg)	0.25 lb (0.11 Kg)
<b>Agency approvals</b>	UL/cUL listed, File #E37066	UL/cUL-recognized component, File #E37066; CE certified

# RELAYS & CONTACTORS

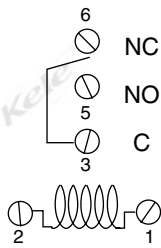
**POWER RELAYS**  
**KE375, KE900 SERIES**



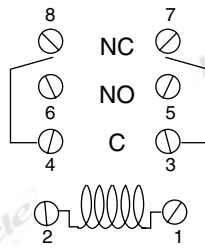
## DIMENSIONS



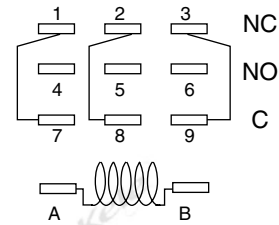
## WIRING



**KE900S**



**KE900D**



**KE375T**

## ORDERING INFORMATION

MODEL	DESCRIPTION
<b>KE375T120VAC</b>	3PDT Power relay 120 VAC coil
<b>KE375T24VAC</b>	3PDT Power relay 24 VAC coil
<b>KE375T24VDC</b>	3PDT Power relay 24 VDC coil
<b>KE900S120VAC</b>	SPDT Power relay 120 VAC coil
<b>KE900S24VAC</b>	SPDT Power relay 24 VAC coil
<b>KE900S24VDC</b>	SPDT Power relay 24 VDC coil
<b>KE900D120VAC</b>	DPDT Power relay 120 VAC coil
<b>KE900D24VAC</b>	DPDT Power relay 24 VAC coil
<b>KE900D24VDC</b>	DPDT Power relay 24 VDC coil